



About the NDIS



Easy English

This factsheet has some hard words. The first time we write a hard word it is in **blue**.

We write what the hard word means.

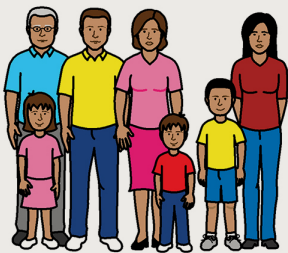
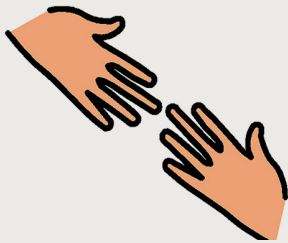
What is this factsheet about?



This factsheet is about the **National Disability Insurance Scheme**.

The National Disability Insurance Scheme is called the NDIS. The NDIS is the new way to help people under 65 with disability get

- care
- supports.



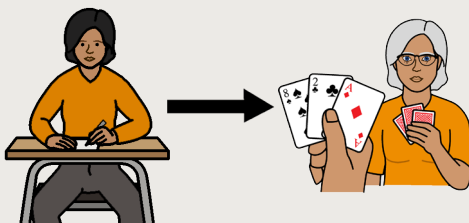
The NDIS also helps families and carers with information about services to support people with disability.

When people get help from the NDIS they can enjoy an ordinary life

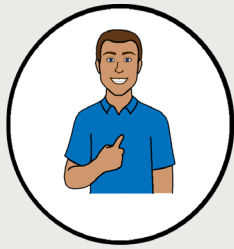
- now

and

- as their life changes.

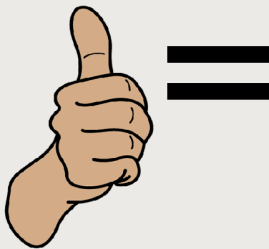


What supports will the NDIS pay for?

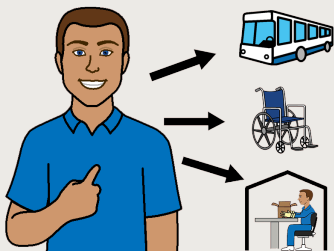


We call a person who gets the NDIS a **participant**.

The NDIS will pay for the **reasonable** and **necessary** supports that a participant needs to enjoy an ordinary life.



Reasonable means something that is fair.



Necessary means something a person **must** have.

How will the NDIS help people with disability?



The supports that the NDIS pays for can help participants

- be more **independent**. Independent means you can do things by yourself. For example, changes to your bathroom so you can shower yourself.



- join in the community. For example
 - get a job

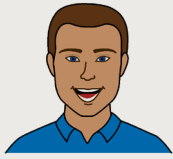


- join a group.



- get equipment. For example
 - a wheelchair
 - a communication device.

Why do we need the NDIS?



Before the NDIS some people got the supports they needed.



Other people did **not** get the supports they needed. This was **not** fair.



We need the NDIS so that anyone with permanent disability under 65 knows that they can

- get the supports they need

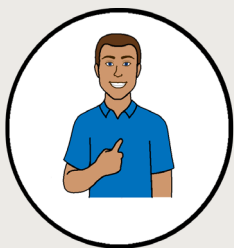
and

- have
 - choice
 - flexibility
 - control over their supports.



The NDIS supports can help people with disability reach their goals.

Who can get the NDIS?



There are rules about who can be an NDIS participant.

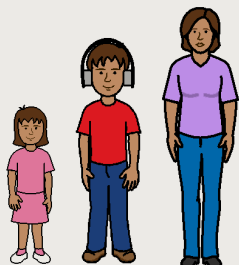


To be a participant a person must be allowed to live in Australia forever. This means you

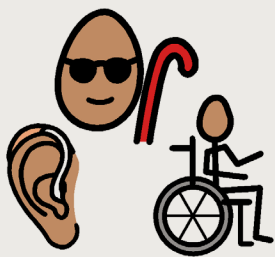
- were born in Australia

or

- have a special piece of paper saying you can live in Australia forever.



A person must be under 65.



To be a participant a person must also have a **permanent** disability that fits the NDIS rules. Permanent means the disability will not go away.



A person must live in an area where the NDIS has started.

We tell you more about this on page 10.

What happens if a person does not fit the NDIS rules?



If a person does **not** fit the NDIS rules the NDIS can still help. For example, tell the person about different services.

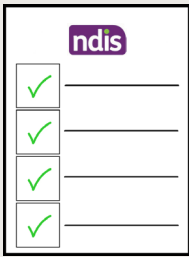
You can find out more on our website

www.ndis.gov.au

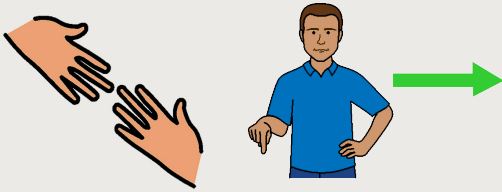


Or you can phone us 1800 800 110

When will the NDIS start?



The NDIS has started in some parts of Australia. The government has a plan for when the NDIS will start in other parts of Australia.



The plan says some people might get supports before other people because of

- their age
- where they live in Australia.



We want to go slowly and get things right. By 2019 the NDIS will have started everywhere in Australia.



You can find out more on our website

www.ndis.gov.au

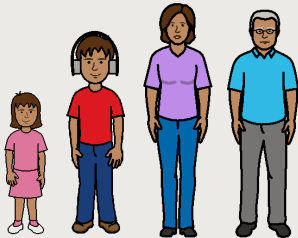


Or you can phone us 1800 800 110

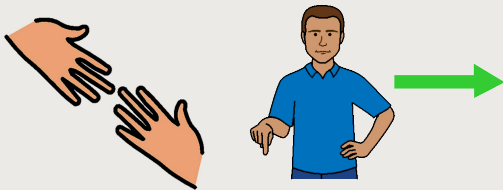
How long will participants get support?

NDIS participants will get support

- now
- as their life changes.

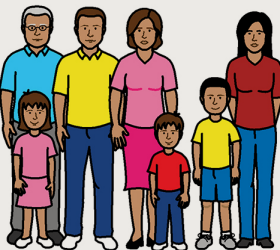


Supports participants get now

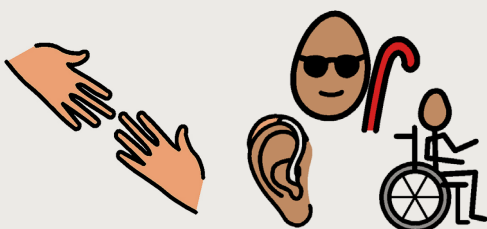


When a participant gets help now it

- might mean the participant needs less support later



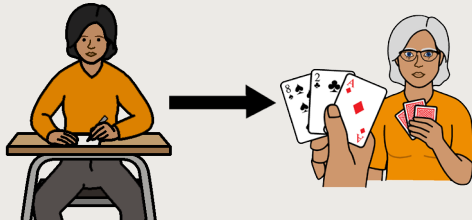
- can help carers and family members look after the participant



- might make the disability better

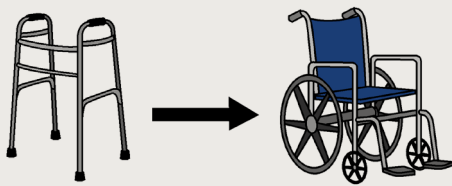
or

- might stop the disability getting worse.

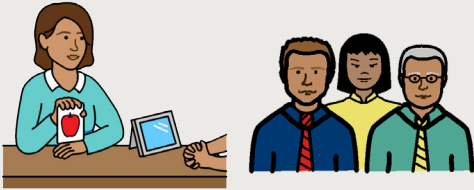


Supports participants get as their life changes

When a participant's life changes, their support needs and goals might also change.



The NDIS will make sure participants get the right supports as their goals and support needs change.

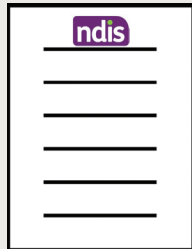


What is an NDIS provider?

Every NDIS participant has a plan with goals.

The plan says

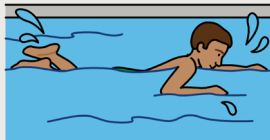
- what a participant wants and needs
- how they want to be supported.



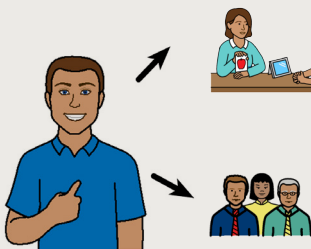
An **NDIS provider** is someone who has products or services that can help participants achieve what is in their plan. For example



- communication devices



- swimming lessons.



Participants can choose and change their providers.



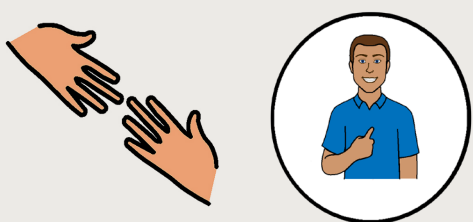
Our website has information for providers.

www.ndis.gov.au

What is the National Disability Insurance Agency?

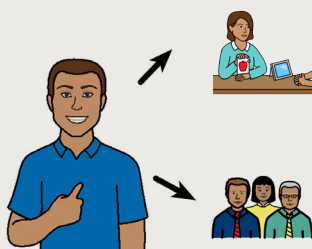


The **National Disability Insurance Agency** makes the NDIS happen. We call it the **NDIA**.

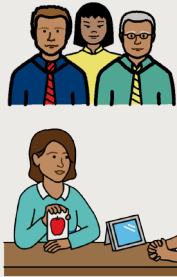


The NDIA helps participants know about

- different support choices they have now
- different support choices they have as their life changes
- different NDIS providers.



This can help participants decide the best supports for them.

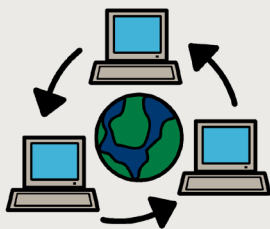


The NDIA helps providers deliver the supports that participants need



The NDIA also helps people in the community know more about what they can do to support people with disability.

More information



Go to our website

www.ndis.gov.au



Call 1800 800 110

Monday to Friday

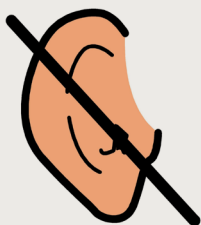
9am to 5pm



Is English hard for you?

Do you speak a different language?

Call 13 14 50



Are you deaf or hearing impaired?

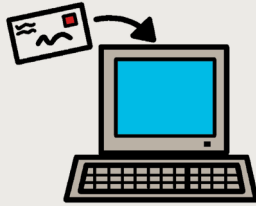
You can use TTY.

Call 1800 555 677

Then give the number 1800 800 110



Is your speech hard to understand?
You can use the NRS Speak and Listen
Call 1800 555 727
Then give the number 1800 800 110



Send us an email
enquiries@ndis.gov.au



Follow us on Twitter
@NDIS



Find us on Facebook
facebook.com/NDISAUS

© Scope (Aust) Ltd. You may use this document for your own personal, non-commercial purposes **only**. You must not use the document for any other purpose, and must not copy, reproduce, digitise, communicate, adapt, modify the document or any part of it (or authorise any other person to do so) without the prior consent of Scope (Aust) Ltd.

Scope's Communication and Inclusion Resource Centre

wrote the Easy English. June 2016 www.scopevic.org.au

To see the original contact the National Disability Insurance Agency.

The Picture Communication Symbols ©1981–2010 by Mayer-Johnson LLC a Tobii Dynavox company. All Rights Reserved Worldwide. Used with permission. Boardmaker™ is a trademark of Mayer-Johnson LLC.